

SPRAYMAX

FEATURE

Higher NSD

BENEFIT

Longer life

FEATURE

Advanced VF technology

BENEFIT

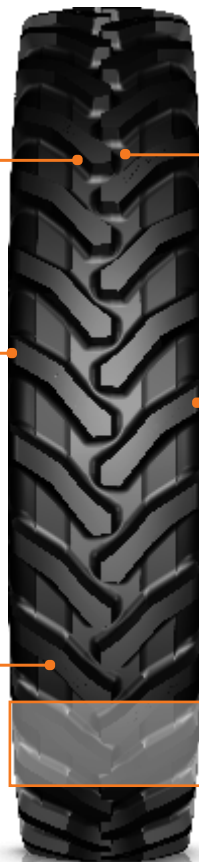
40% more load carrying capability than a standard radial

FEATURE

Stepped lug design

BENEFIT

Better grip and traction



FEATURE

Advanced Lug Geometry

BENEFIT

Better roadability

FEATURE

Rounded shoulder

BENEFIT

Provides less soil and crop damage. Better grip

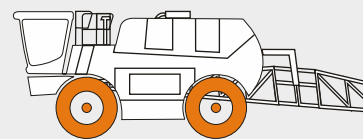
FEATURE

Steel belted radial construction

BENEFIT

Protection from Punctures

MACHINERY



Sprayer

| Size | Rim | Type | Unloaded dimension | | Loaded Static Radius | Rolling Circumference | Speed Radius Index (SRI) | Load Index Speed Symbol | Infl. Press. | Maximum load, kg (lbs) Speed, km/h (mph) | | | | | |
|-------------------|----------|------|--------------------|--------------|----------------------|-----------------------|--------------------------|-------------------------|--------------|---|---------------|-------|---------|-----|-------|
| | | | SW | OD | | | | | | MIXED APPLICATION | | | CYCLIC* | | |
| | | | mm/in | mm/in | | | | | | 10 | 15 to 65 km/h | 70 | bar | 10 | |
| | | | | | | | | | | 6 | 10 to 40 mph | 43 | psi | 6 | |
| VF 380/105R50 SB* | W13, W12 | TL | 383 15.1 | 2050 80.7 | 947 37.3 | 6150 242.1 | 1000 | 179 D | 0.8 | 8790 | 4090 | 3820 | 3480 | 1.6 | 5350 |
| | | | | | | | | | 12 | 19360 | 9010 | 8410 | 7670 | 23 | 11780 |
| | | | | | | | | | 1.2 | 11160 | 5200 | 4850 | 4410 | 2 | 6790 |
| | | | | | | | | | 17 | 24580 | 11450 | 10680 | 9710 | 29 | 14960 |
| | | | | | | | | | 1.6 | 13230 | 6160 | 5750 | 5230 | 2.4 | 8050 |
| | | | | | | | | | 23 | 29140 | 13570 | 12670 | 11520 | 35 | 17730 |
| | | | | | | | | | 2.4 | 16790 | 7820 | 7300 | 6640 | 3.2 | 10220 |
| | | | | | | | | | 35 | 36980 | 17220 | 16080 | 14630 | 46 | 22510 |
| | | | | | | | | | 3.4 | 20630 | 9610 | 8970 | 8160 | 4.2 | 12560 |
| | | | | | | | | | 49 | 45440 | 21170 | 19760 | 17970 | 61 | 27670 |
| | | | | | | | | | 4.4 | 17830 | 8300 | 7750 | 7050 | 5.2 | 10850 |
| | | | | | | | | | 64 | 39270 | 18280 | 17070 | 15530 | 75 | 23900 |

* SB - Steel belted

All tires confirms ETRTO T&RA & STRO standards