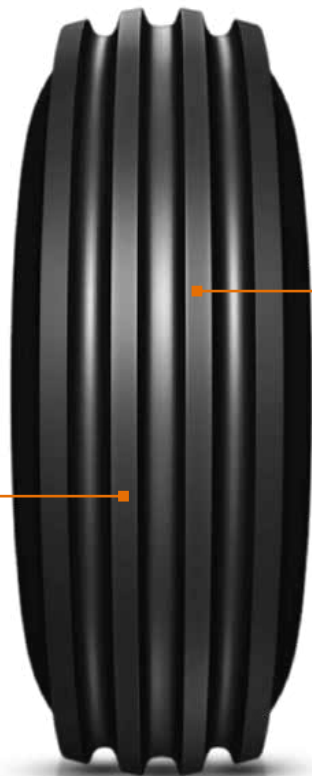


# FARMAX F2M



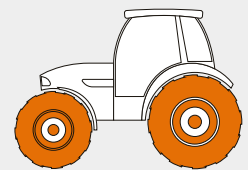
**FEATURE**  
Multi rib design

**BENEFIT**  
Easy steering

**FEATURE**  
Cut-resistant compound

**BENEFIT**  
Enhance traction and roadability

## MACHINERY



Tractor

Size	LI/SS	PR	Type	Rim	Unloaded dimension		SLR	RC	Load Carrying Capacity		
					SW	OD			Infl. Press	Max. speed	Max. load
					mm	mm	bar	kmph			
					in	in	psi	mph	lbs		
11.00-16 SL	123 A8	12	TL	10 LB	315	967	435	2901	4.15	40	1550
					12.4	38.1	17.1	114.2	60	25	3415

All tires confirms ETRTO T&RA & STRO standards