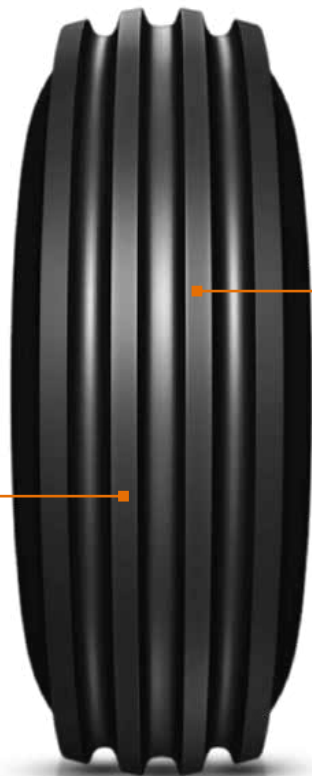


FARMAX F2M



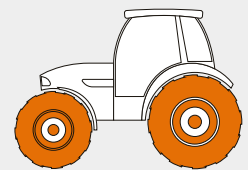
FEATURE
Multi rib design

BENEFIT
Easy steering

FEATURE
Cut-resistant compound

BENEFIT
Enhance traction and roadability

MACHINERY



Tractor

Size	LI/SS	PR	Type	Rim	Unloaded dimension		SLR	RC	Load Carrying Capacity		
					SW	OD			Infl. Press	Max. speed	Max. load
					mm	mm	bar	kmph			
					in	in	psi	mph	lbs		
11.00-16 SL	114 A8	8	TL	10 LB	315	967	435	2901	2.8	40	1180
					12.4	38.1	17.1	114.2	40	25	2600

All tires confirms ETRTO T&RA & STRO standards