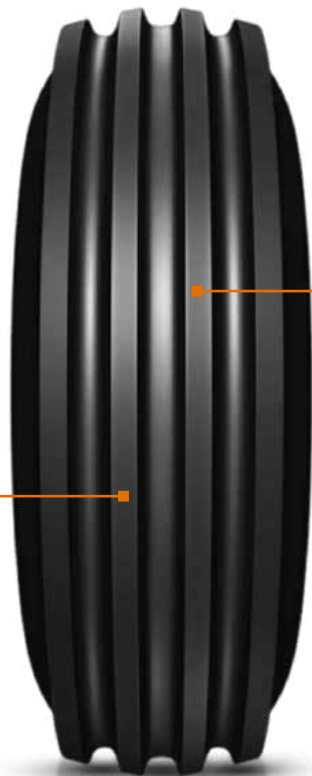


# FARMAX F2M



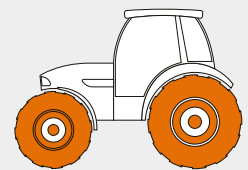
**FEATURE**  
Multi rib design

**BENEFIT**  
Easy steering

**FEATURE**  
Cut-resistant compound

**BENEFIT**  
Enhance traction and roadability

## MACHINERY



Tractor

Size	LI/SS	PR	Type	Rim	Unloaded dimension		SLR	RC	Load Carrying Capacity		
					SW	OD			Infl. Press	Max. speed	Max. load
					mm	mm	bar	kmph	kg		
					in	in	psi	mph	lbs		
10.00-16 SL	110 A8	8	TL	8 LB	274	894	402	2682	3	40	1060
					10.8	35.2	15.8	105.6	44	25	2335

All tires confirms ETRTO T&RA & STRO standards