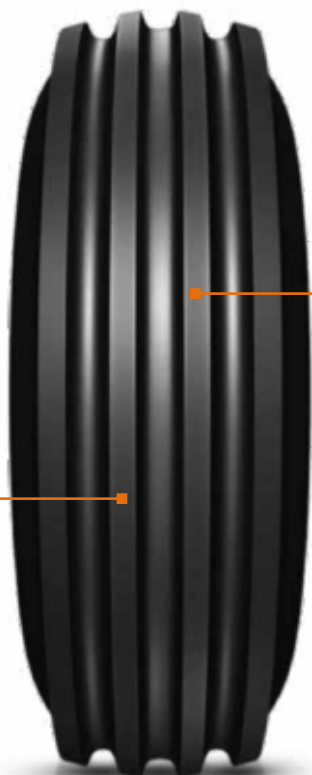


# FARMAX F2M



**FEATURE**

- Multi rib design

**BENEFIT**

- Easy steering

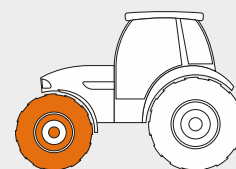
**FEATURE**

- Cut-resistant compound

**BENEFIT**

- Enhance traction and roadability

**MACHINERY**



Tractor

| Size       | LI/SS  | PR | Type | Rim | SW  | OD  | SLR | RC   | Infl. Press | Max. Speed | Max Load |
|------------|--------|----|------|-----|-----|-----|-----|------|-------------|------------|----------|
|            |        |    |      |     | mm  | mm  | mm  | mm   | bar         | kmph       | kg       |
|            |        |    |      |     | in  | in  | in  | in   | psi         | mph        | lbs      |
| 11.00-16SL | 114 A8 | 8  | TL   | 8L  | 315 | 967 | 435 | 2901 | 2.8         | 40         | 1180     |
|            |        |    |      |     | 12  | 38  | 17  | 114  | 40          | 25         | 2600     |

All tires confirms ETRTO T&RA & STRO standards