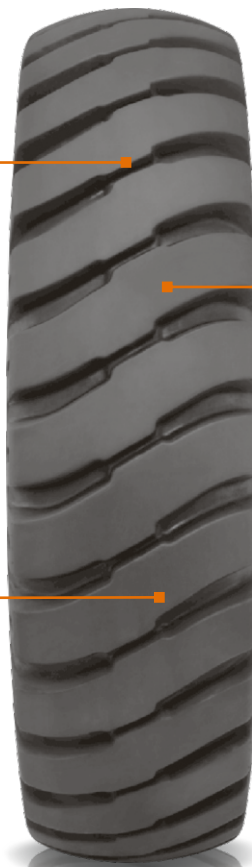


GRIP MASTER N.D.



FEATURE

- Specially design non directional tread pattern

BENEFIT

- Superiors traction & grip

FEATURE

- Strong nylon casing

BENEFIT

- High load carrying capacity

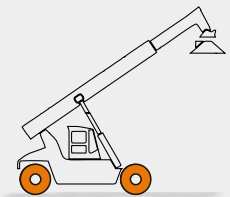
FEATURE

- Special heat, cut & weather resistance compound

BENEFIT

- Resistance to cut & snags

MACHINERY



Reach Stacker

Size	Type	PR	Rim	Unloaded Dimensions		SLR	RC	Infl. Press	Load capacity						
				SW	OD				Speed kmph/ mph						
									mm	mm	Static	25	10	5	1
												15	5	3	0.6
in	in	in	in	bar	Recommended load kg/ lbs										
14.00-24	TT	28	10	385	1368	630	4050	10	18000	12500	13500	14500	16000		
				15	54	25	159	145	39685	27560	29760	31965	35275		

Also available in sizes: 18.00-25
All tires confirms ETRTO T&RA & STRO standards