

# SPRAYMAX

**FEATURE**  
Higher NSD

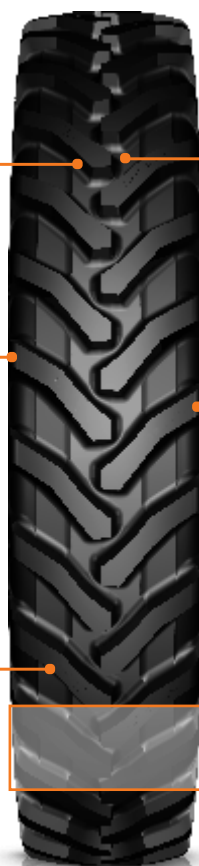
**BENEFIT**  
Longer life

**FEATURE**  
Advanced VF  
technology

**BENEFIT**  
40% more load carrying  
capability than a  
standard radial

**FEATURE**  
Stepped lug design

**BENEFIT**  
Better grip and traction



**FEATURE**  
Advanced  
Lug Geometry

**BENEFIT**  
Better roadability

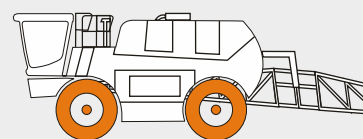
**FEATURE**  
Rounded shoulder

**BENEFIT**  
Provides less soil  
and crop damage.  
Better grip

**FEATURE**  
Steel belted radial  
construction

**BENEFIT**  
Protection from  
Punctures

## MACHINERY



Sprayer

Size	Rim	Type	Unloaded dimension		Loaded Static Radius	Rolling Circum- ference	Load Index Speed Symbol	Infl. Press.	Maximum load, kg (lbs) Speed, km/h (mph)					
			SW	OD					NON CYCLIC				CYCLIC*	
			mm/in	mm/in					static	10	15 to 65 km/h	70	bar	10
										6	10 to 40 mph	43	psi	6
VF 480/ 95R54 SB*	W16L, W15L	TL	479 18.9	2284 89.9	1051 41.4	6853 269.8	180 D	0.8	8790	4090	3820	3480	1.6	5350
								12	19360	9010	8410	7670	23.2	11780
								1.2	11160	5200	4850	4410	2.0	6790
								17	24580	11450	10680	9710	29.0	14960
								1.6	13230	6160	5750	5230	2.4	8050
								23	29140	13570	12670	11520	34.8	17730
								2.0	15090	7030	6560	5970	2.8	9180
								29	33240	15480	14450	13150	40.6	20220
								2.4	16790	7820	7300	6640	3.2	10220
								35	36980	17220	16080	14630	46.4	22510
								2.8	18400	8570	8000	7280	3.6	11200
								41	40530	18880	17620	16040	52.2	24670

\* SB - Steel belted

All tires confirms ETRTO T&R & STRO standards